

## The “*Beis Lechem*” [House of Bread] Institution

In 1922, in order to provide hundreds of poor, dignified Jewish families with bread, a few Jewish social-activists founded the “*Beis Lechem*” Society.

In November 1937, at the celebration of this institution’s 15<sup>th</sup> anniversary, it was realised that the Jewish population’s financial situation had very much worsened and that the obligations of “*Beis Lechem*” towards the needy had increased even more.

It also emerged that it was necessary to give great thanks to “*Beis Lechem*” for its initiative to feed over 400 children, pupils of “*Machzikei Ha’Das*” [a *cheder*] and of the municipal “*Talmud Torah*”. Besides this, “*Beis Lechem*” also distributed food-packages among a few hundred Jewish families for all the holidays, as well as during the whole year – for the especially poor Częstochowa Jews.

As much as possible, the Society regularly requested aid from the wealthy Jewish inhabitants, their needy and hungry brothers and sisters.

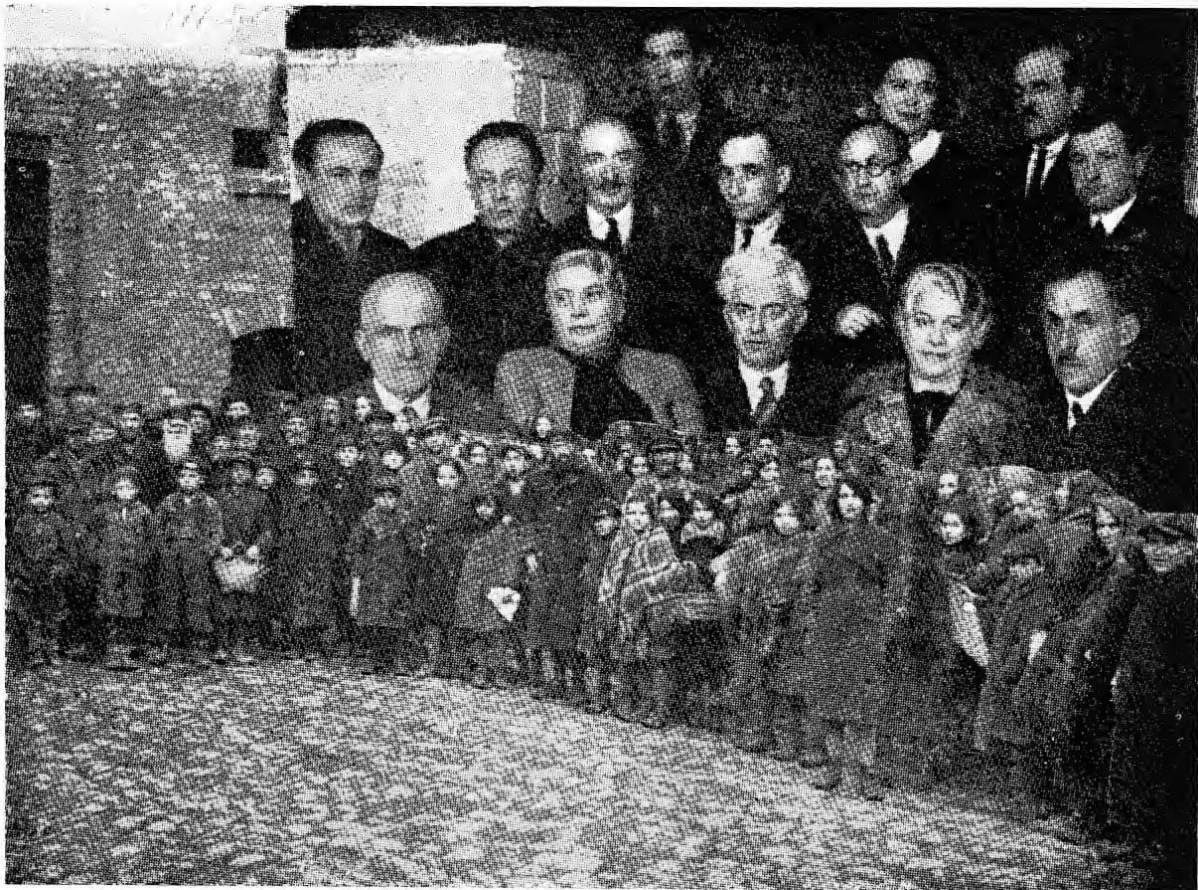
“*Beis Lechem*” also organised a winter-campaign to provide the needy with coal and potatoes. Every year, the first transport consisted of distributing six wagons of coal and four wagons of potatoes.

In order to carry out the operation properly, the Society organised a fundraiser, from house to house, and saw to it that everyone was taxed, as needs grew from day to day.

At the institution’s annual general meeting, which was at the premises of the Jewish *Kehilla*, the following were elected to the board of management: A. Abramowicz, M. Orzynski, B. Bocian, L. Baum, M. Sz. Bencelowicz, T. Goldsztajn, Z. Gonszerowicz, Sz. Diament, E. Hauptman, A. Win, S. Wajnbaum, Ch. Chaskel, M. Tobiasz, J. Sz. Tenenbaum, Tenenberg, L. Jakubowicz, A. Jurewicz, H. Lapidés, A. Lichter, Neumark, Sz. Nemirowski, M. Samsonowicz, Essig, A. Epsztajn, M. Epsztajn, Sz. Fajga, D. Filipowicz, T.L. Feferberg, M. Kozak, A. Kongrecki, Sz. Klajn, K. Kelczygłowski, B. Radoszycki, A. Szumacher, J. Szybel and J. Sztrausberg.

The review committee consisted of members Heftler, J. Plocker and M. Rozenchwajg.

Despite the Society’s difficult economic situation at the time, the board of management decided, nevertheless, to conduct the aid-campaign for *Pesach*. Each needy family received the following products: 15 lbs. *matzes*, 120 lbs. potatoes, 2.5 lbs. sugar, 2.5 lbs. margarine, 7.5 lbs. onions and 10 candles, as well as wine for the “four cups”.



*"Tomchei Ani'im" committee in Częstochowa; among them: B. Bocian, Mrs Sztarke, J. Rozenberg, J. Krauzkopf, P. Blumenkranc, Mendel Asz and Szmul Frank. (Below: the protégés)*